

## Worksheet: Changes of State

1. Identify the following phase changes:

a. water turns to ice

\_\_\_\_\_

b. in a warm room, glasses fog up

\_\_\_\_\_

c. dry-ice in an ice cream truck disappears

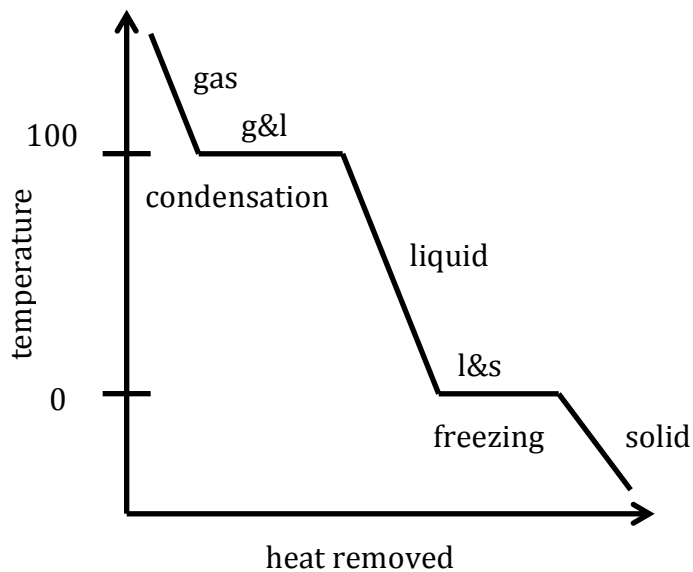
\_\_\_\_\_

d. wet clothes dry on a clothesline

\_\_\_\_\_

2. Calculate how many calories are released when 42 g of water is condensed. Heat of vaporization of water is 540 cal/g.

3. Cooling Curve of Water



a. What is the state of water at 15°C?

\_\_\_\_\_

b. What is the freezing point of water?

\_\_\_\_\_

c. What is the state of water at -5°C?

\_\_\_\_\_

d. What is the condensation point of water?

\_\_\_\_\_

e. Which states are present at 100°C?

\_\_\_\_\_